

TAC Report

Kentaro Motohara (Univ. Tokyo)

Time Allocation Committee

New TAC (11th) Members

Since 2019/7 (S20A), until 2021/6 (S21B)

- ✓ Kentaro Motohara (Chair, Univ. Tokyo)
- ✓ Nozomu Tominaga (Co-Chair/compact objects, Konan Univ.)
- ✓ Takanori Sasaki (solar system, Kyoto Univ.)
- ✓ Takahiro Sumi (exoplanets, Osaka Univ.)
- ✓ Michihiro Takami (star formation, ASIAA)
- ✓ Toshiya Ueta (stars, Denver Univ.)
- ✓ Hidenobu Yajima (cosmology, Tsukuba Univ.)
- ✓ Yoichi Tamura (Hi-z galaxies/general, Nagoya Univ.)
- ✓ Akio Inoue (Hi-z galaxies/cluster, Waseda Univ.)
- ✓ Sakurako Okamoto (nearby galaxies, NAOJ)
- ✓ Toru Misawa (AGN and galaxies, Shinshu Univ.)

The 11th Shogun in Edo Era

Tokugawa Ienari (徳川家斉 : 1773-1841)

- longest-serving shogun of the Tokugawa shogunate (1787-1837)
- Kansei Reforms (寛政の改革) : blocked the relaxation of “Sakoku” policy and reversed the liberalizing reforms in the previous administration (by Tanuma Okitsugu)
- Edict to repel foreign vessels (異国船打払令)

Lessons learned;

- Be liberal, and change old customs
- Be open to international community
- Resign at the end of the term



Reforms

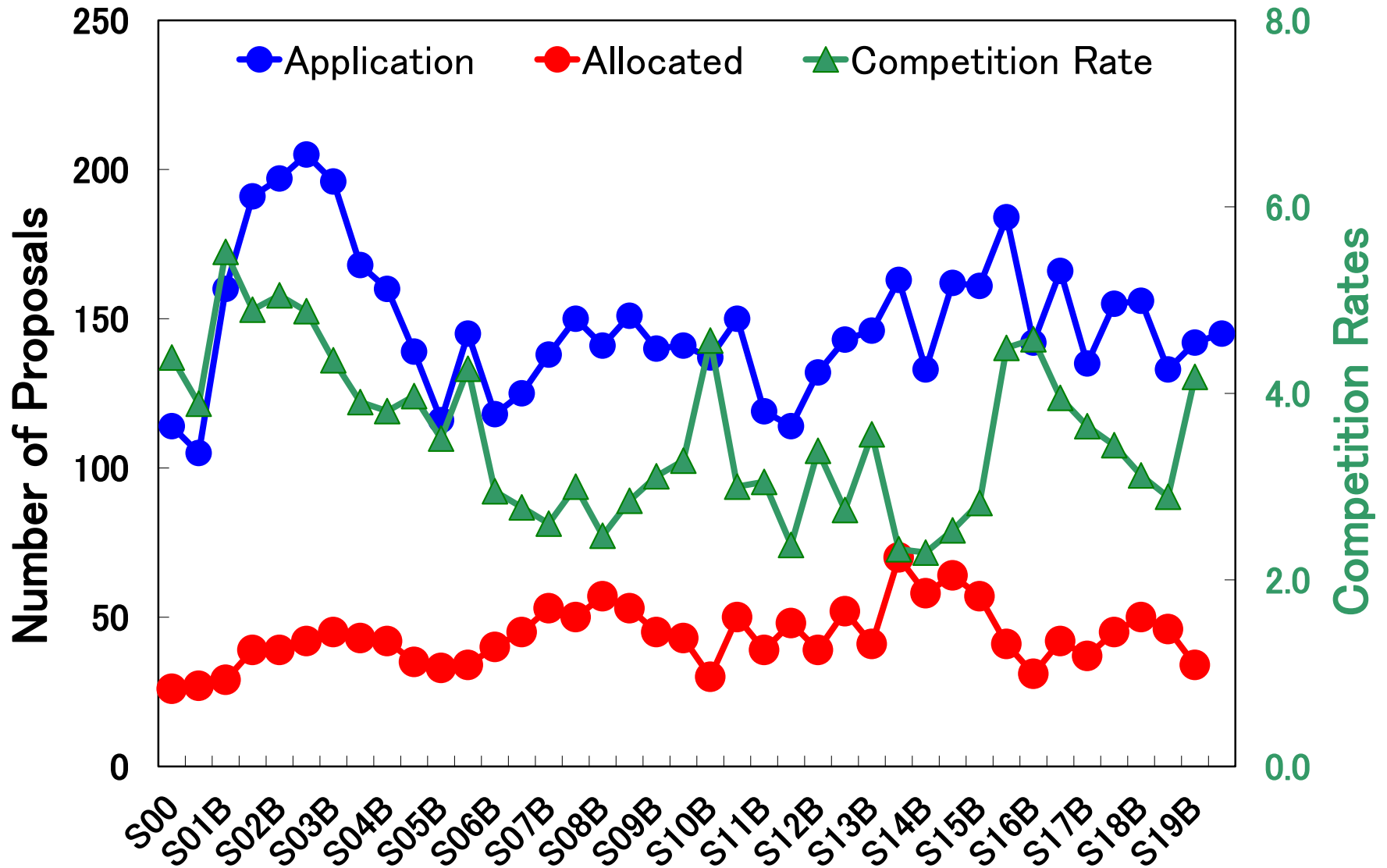
Purpose : reduce the load on the open-use office

- Refereeing process on a web system (development lead by Yagi-san)
 - Worked well in S20A review
 - Got various feedbacks ; will be improved in the next review
- Introduced Office365 to share documents, especially excel tables, which are updated in real-time during the TAC meeting.

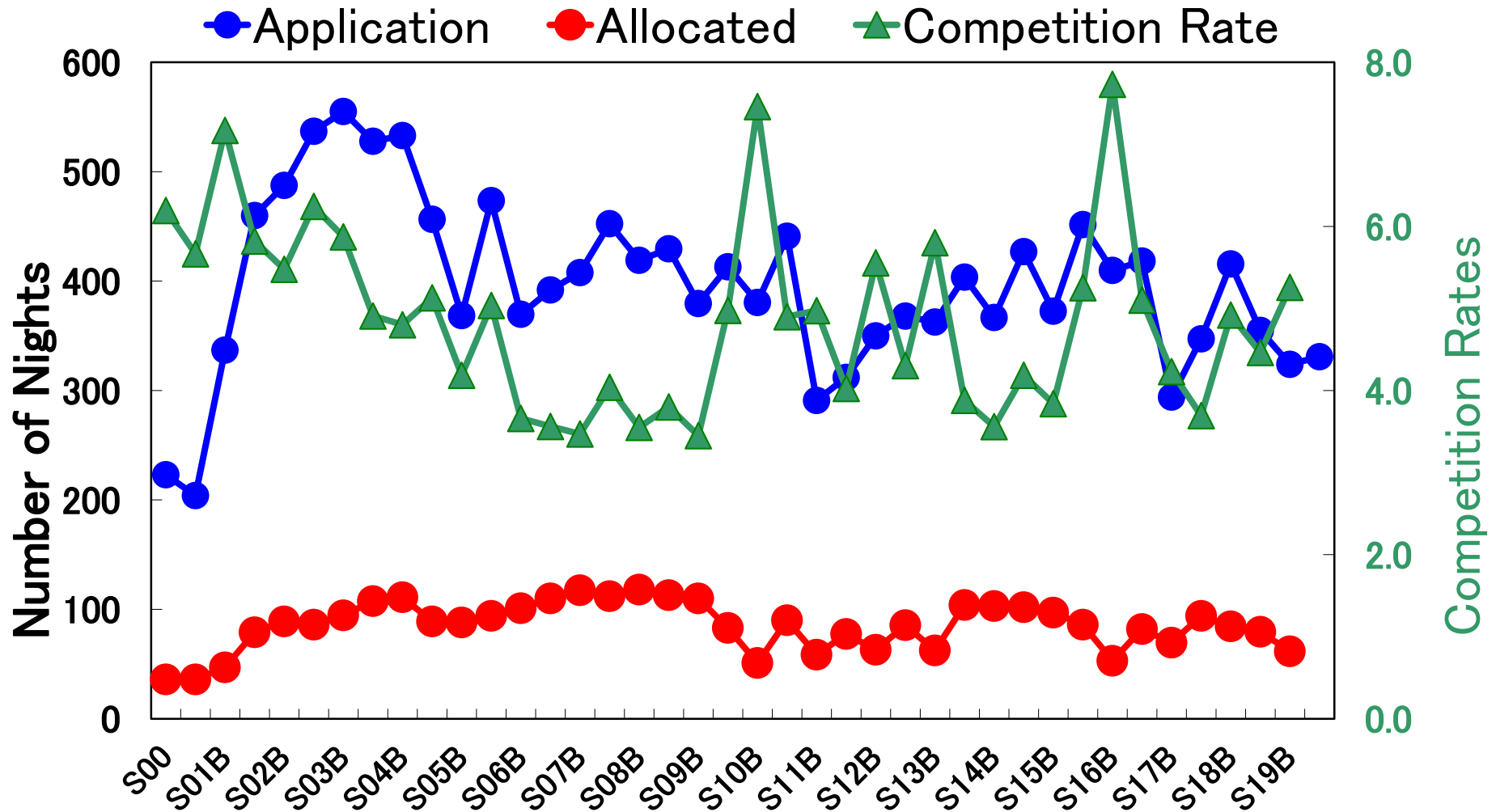
Statistics

As allocation of S20A is not finished yet,
not much update since the last report...

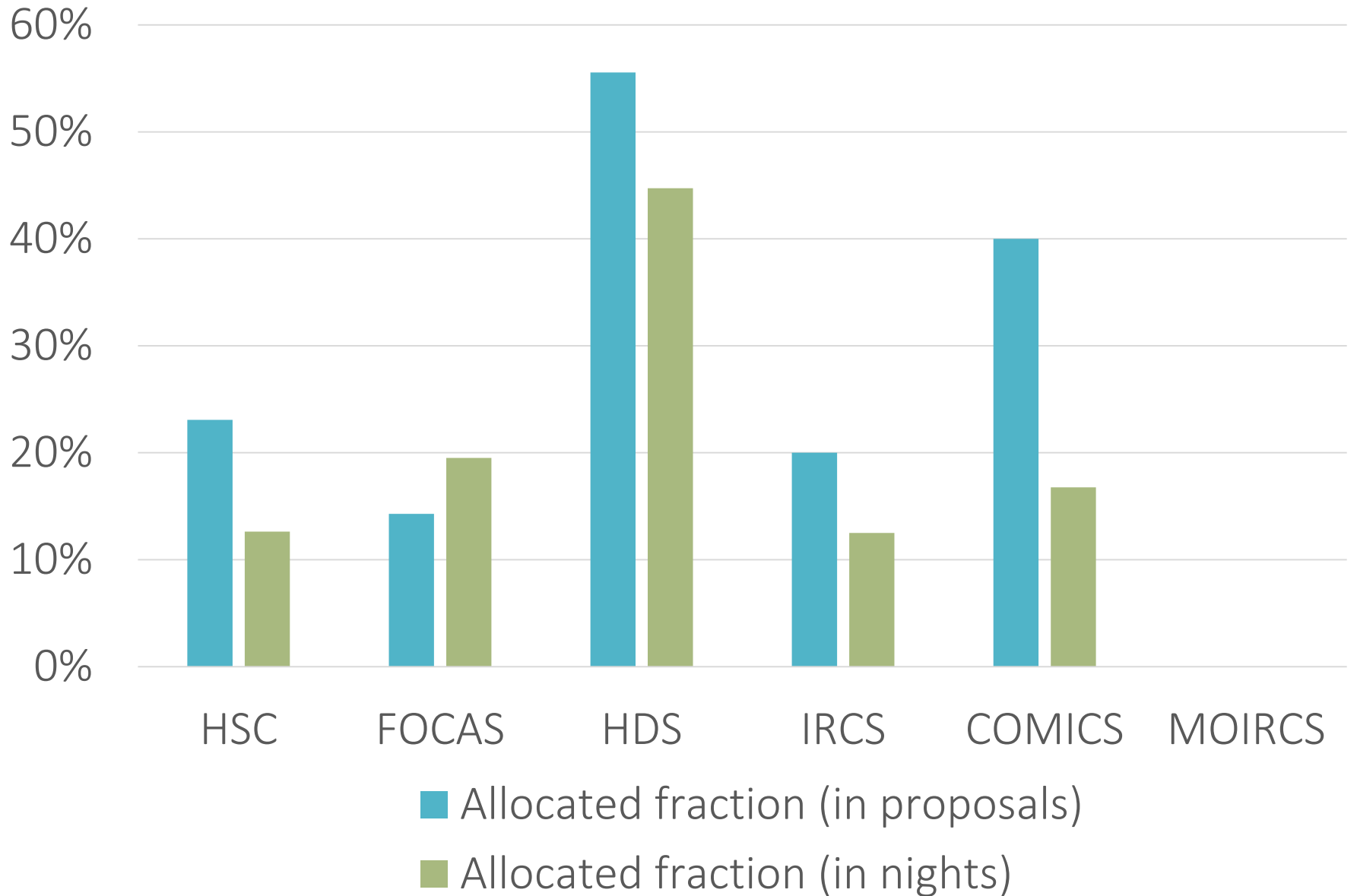
Competition Status (in # of Proposals)



Competition Status (in # of Nights)

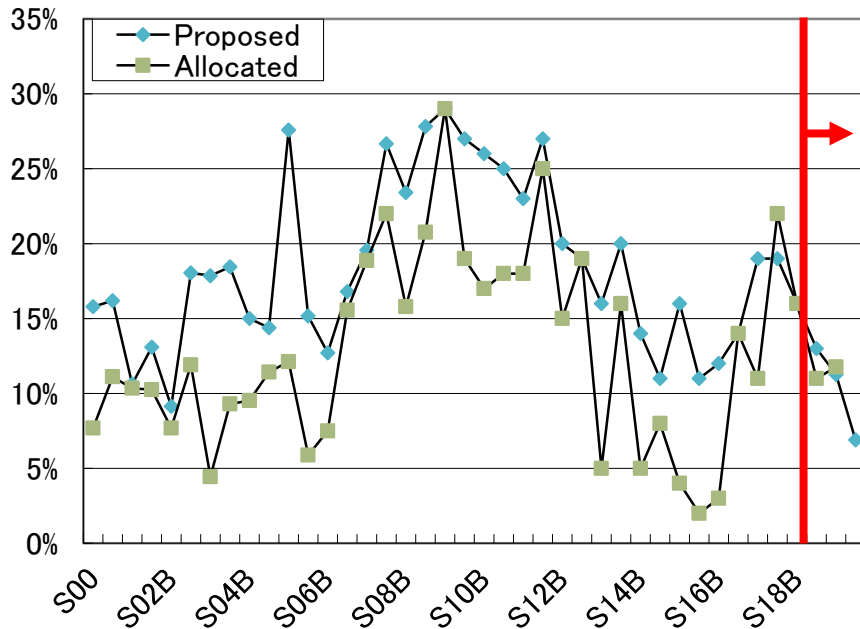


Allocated Fraction of Each Instrument (S19B)

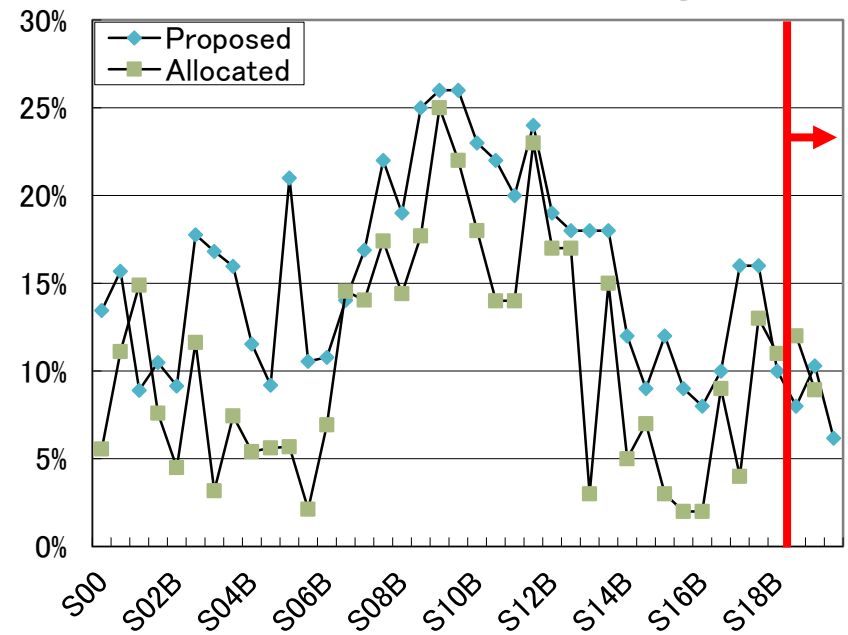


International Proposals

Fraction in number of proposals



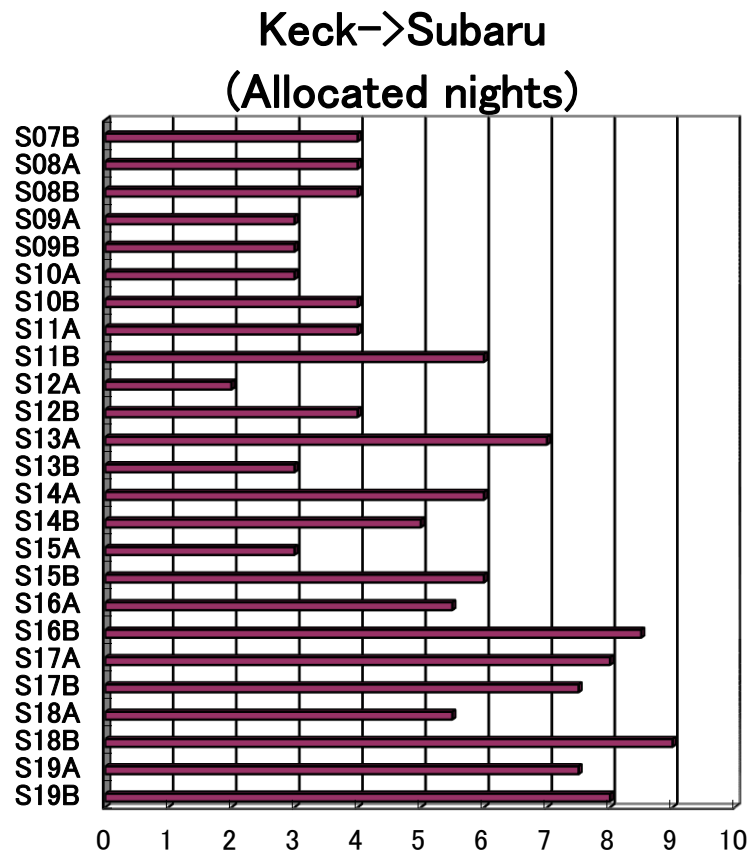
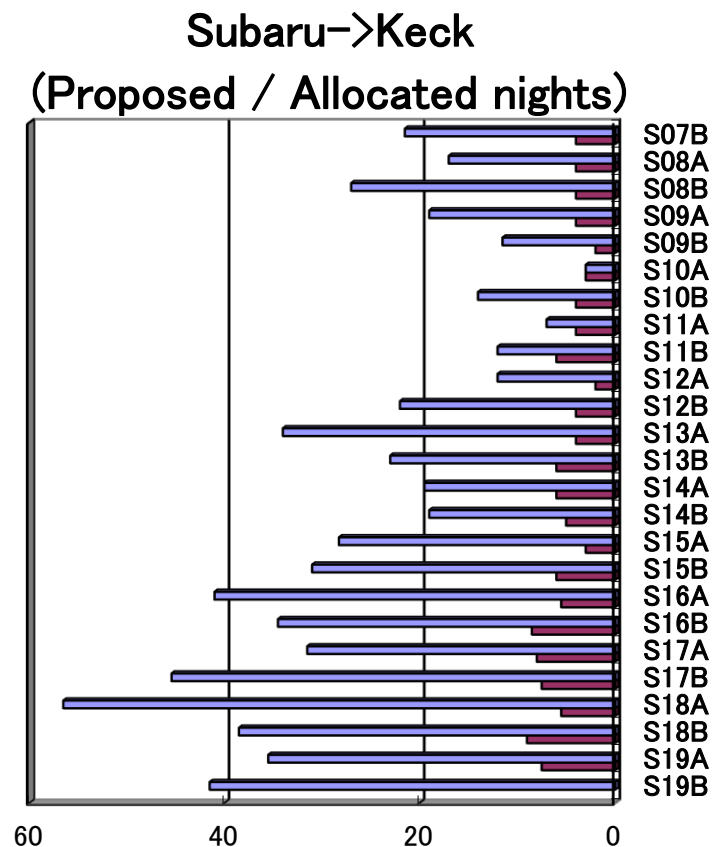
Fraction in number of nights



New rules introduced in S19A

- ✓ <5% in normal program nights for international PI proposals (3n in S19B)
- ✓ <10% in normal program nights for Princeton/Taiwan PI+ international PI proposals (6n un S19B)

Time Exchange (w. Keck)



✓ Keck => Subaru : HSC and COMICS

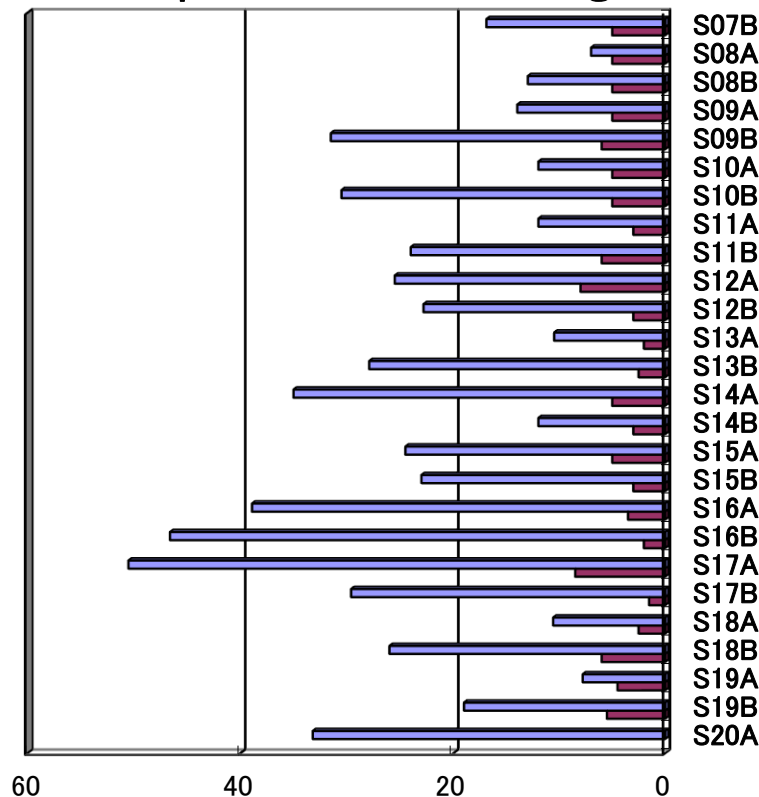
✓ Subaru => Keck : MOSFIRE, DEIMOS, KCWI

Competition rate is still high as 5...

Time Exchange (w. Gemini)

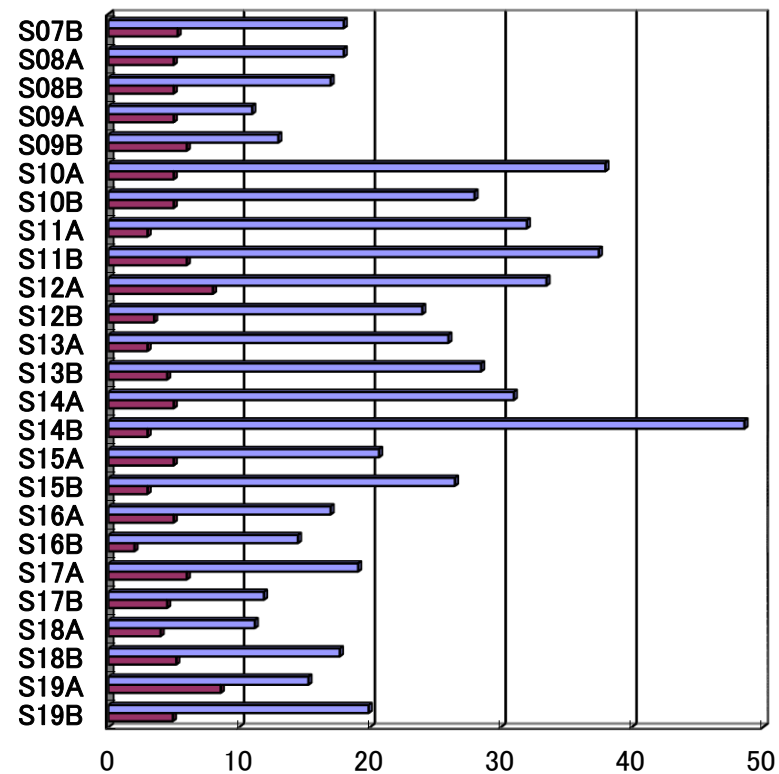
Subaru→Gemini

(Proposed / Allocated nights)



Gemini→Subaru

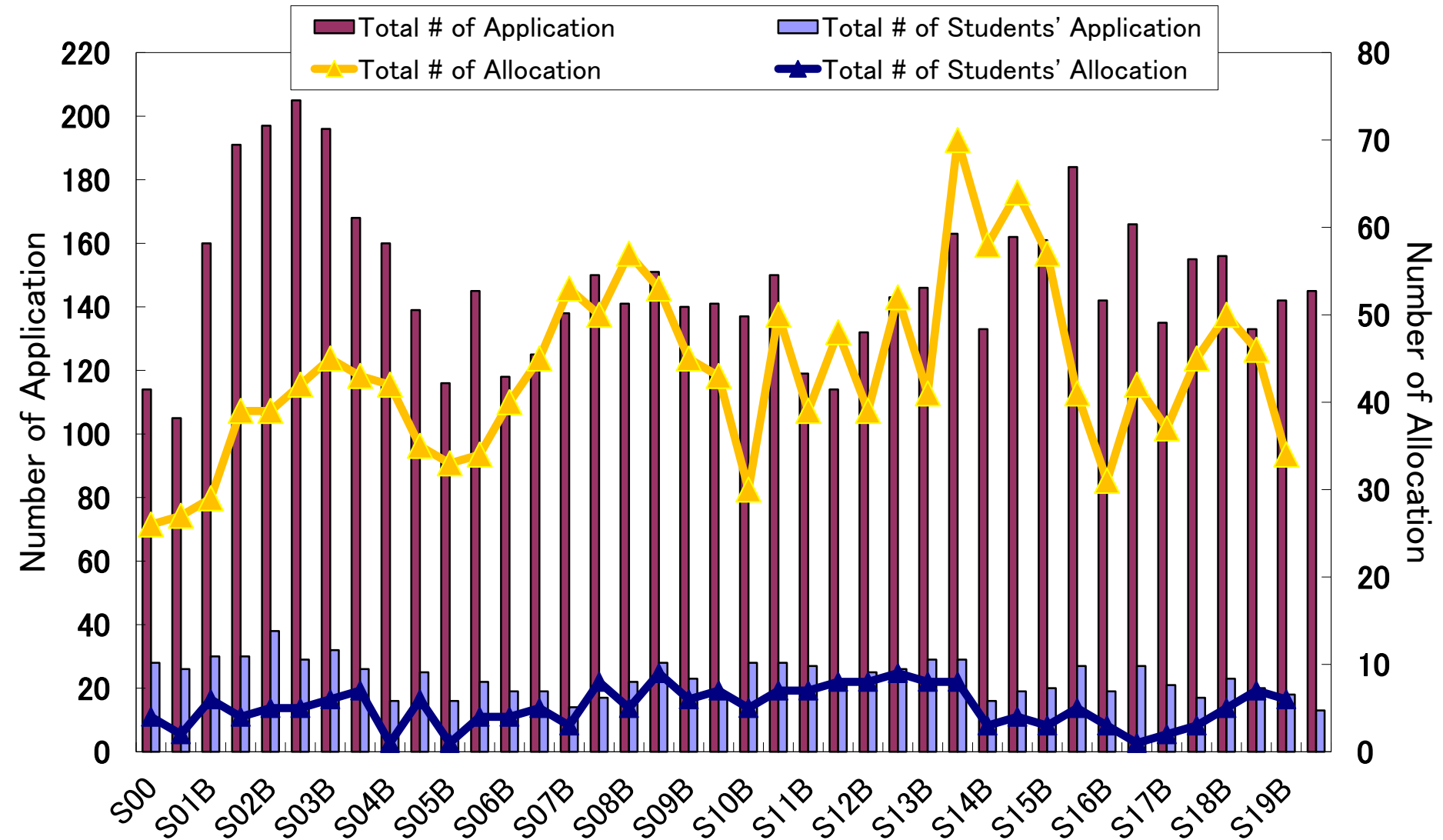
(Proposed / Allocated nights)



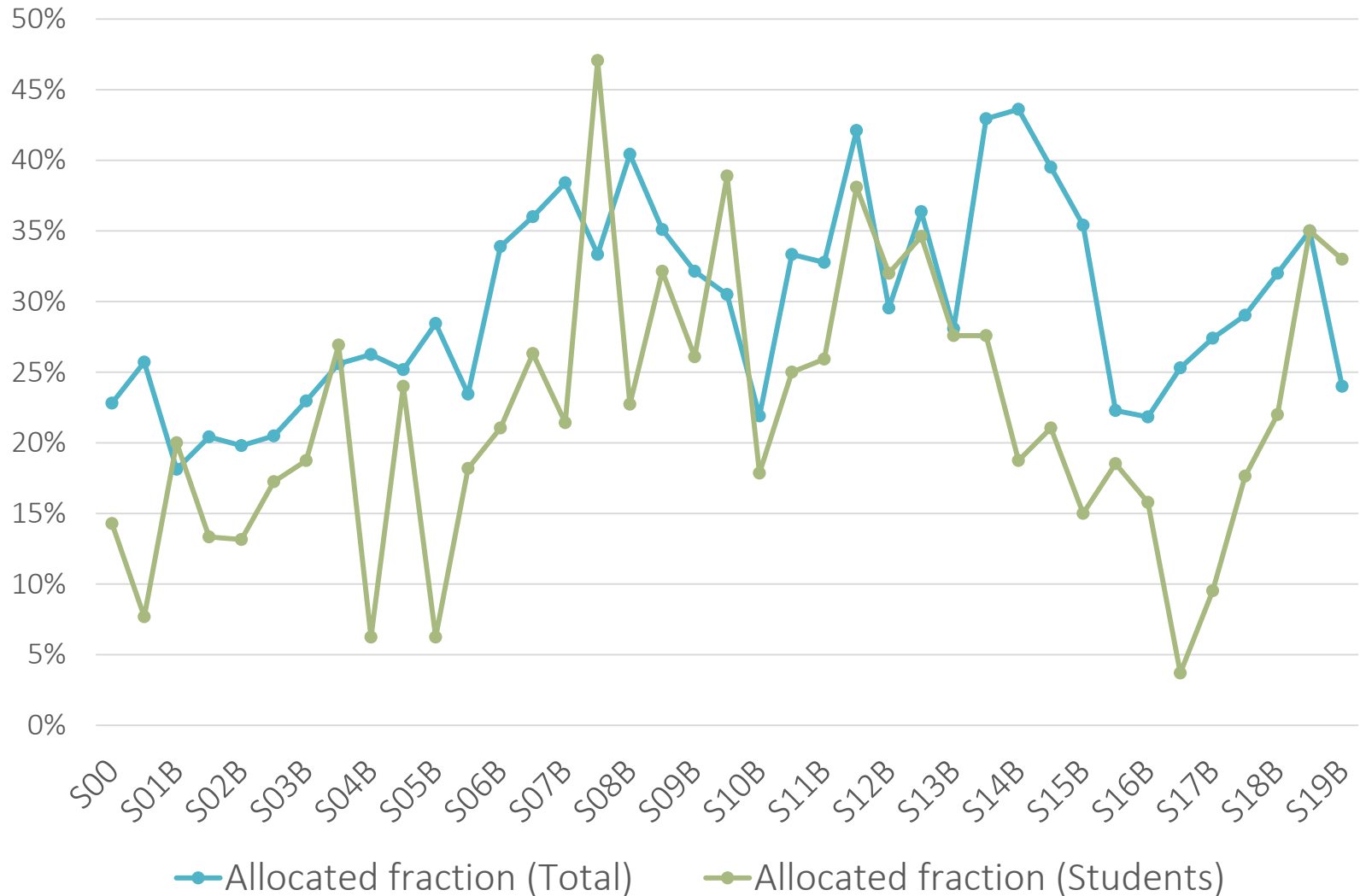
✓ Gemini => Subaru : Mostly HSC

✓ Subaru => Gemini : Mostly GMOS (N and S), ToO demand

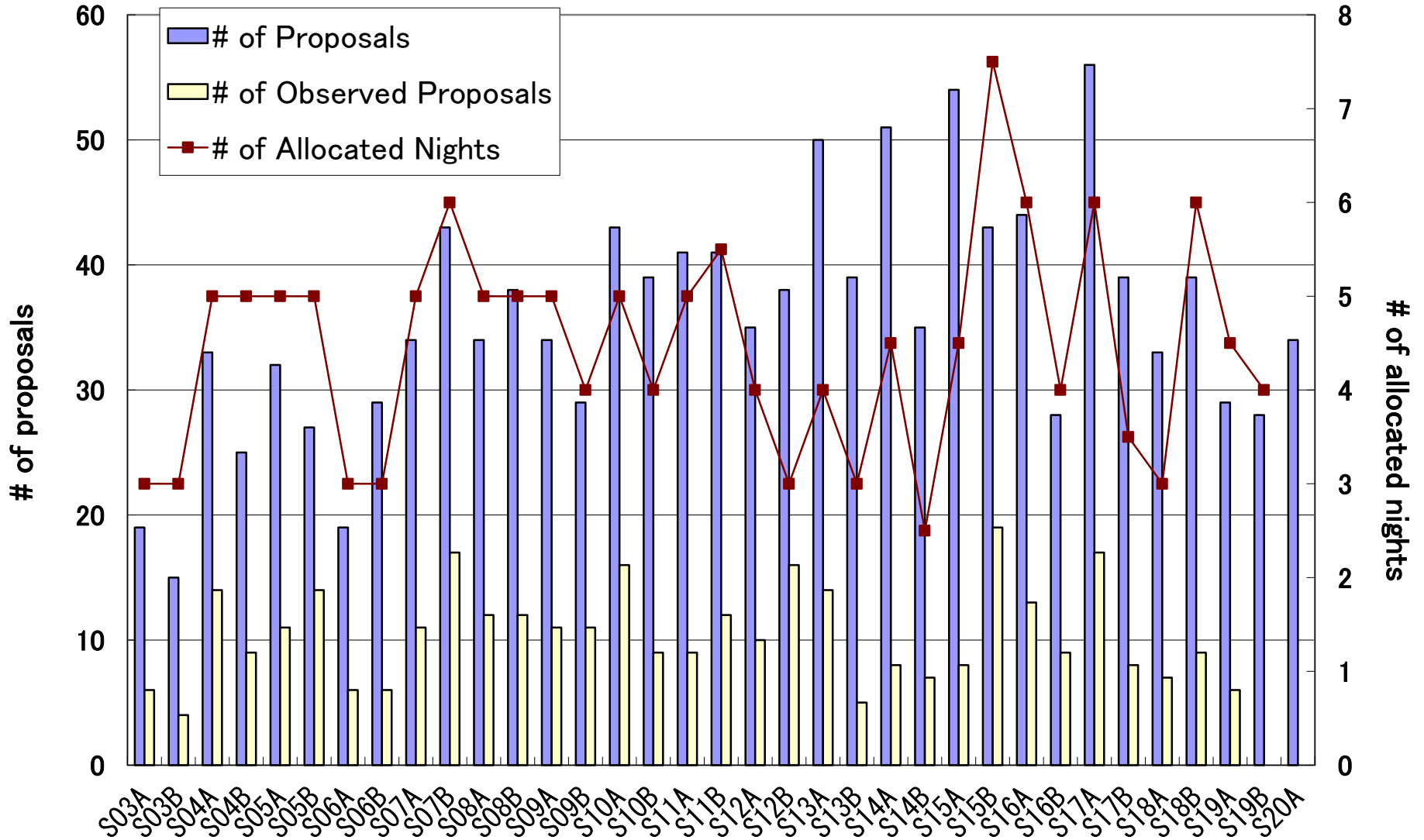
Graduate Students' Proposals (# of proposals)



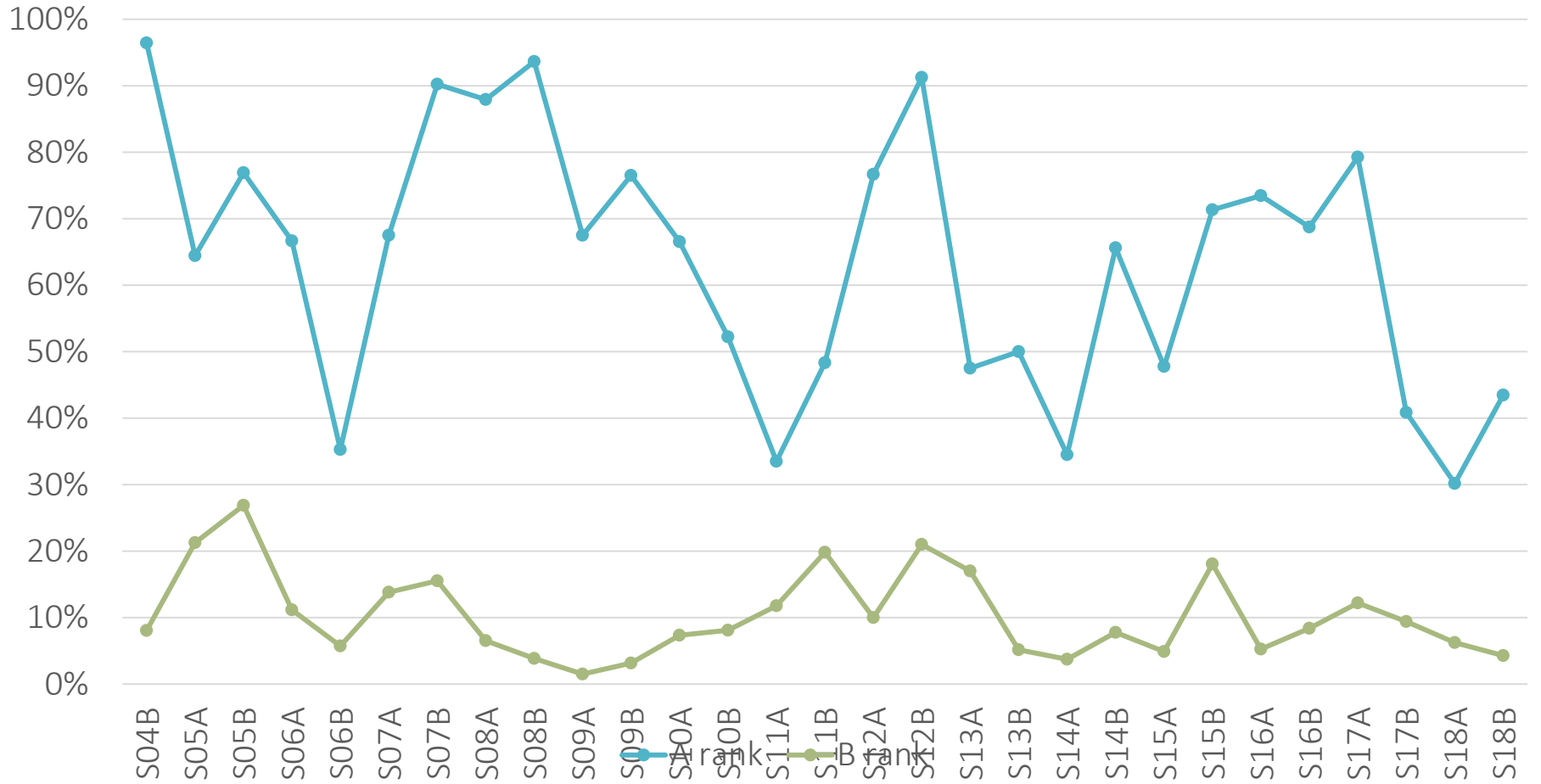
Graduate Students' Proposals (Success rates in # of proposals)



Service Programs (<4hrs)



Completion Rate of Service Programs



Summary

- ✓ New TAC started at S20A
- ✓ No major issue at the moment
- ✓ May need to reform the current TAC system in the future
 - Find a good way to deal with too many “rules” for time allocation, of which we sometimes forget...
 - Have to make a new system once the international partnership is established (as suggested by Akiyama)

Please provide us whatever feedback you have!