

HSC observer's manual

2018 April

1 Uploading and editing your OPE files

- (1) Prepare the OPE files (Observation Procedure Execute file) for your observation.
- (2) Upload your OPE files to the “sumda” server (accessible only in the NAOJ network).
The OPE files should be placed in the “Procedure” directory of your program account.

```
$ scp filename.ope o#####@sumda.sum.subaru.nao.ac.jp:~/Procedure
```

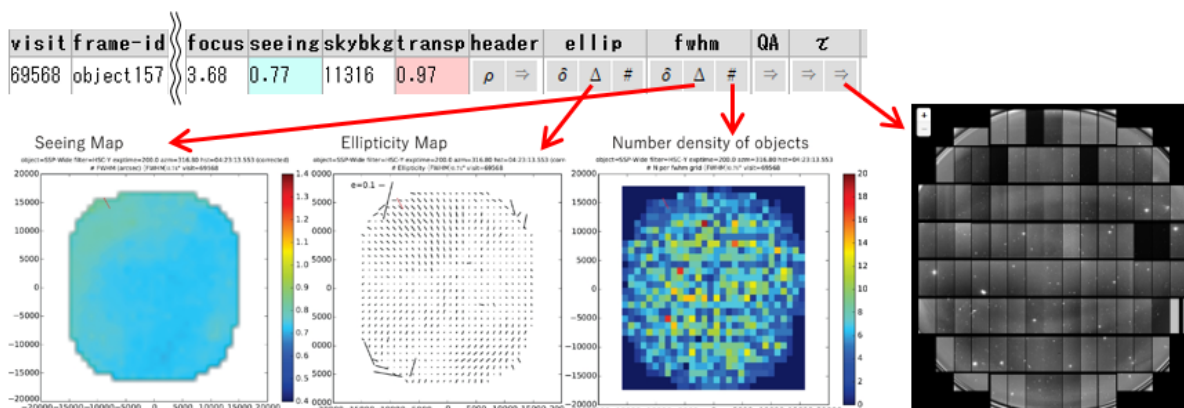
“o#####” is the ID of your program.

Note: Usually the above procedure is done by a Support Astronomer (SA).
If you do it by yourself, please inform your SA of that.

- (3) If you need to edit the uploaded OPE files, please login to the “sumda” server with `ssh`.

2 OBSLOG web application

- (1) Access the following page in your web browser.
<https://hsca-web01.subaru.nao.ac.jp/obslog/session/new>
- (2) Login with your STARS (Subaru Telescope Archive System) account.
- (3) You can see basic information of acquired data, quick-look images, and onsite analysis results.



3 ZVIEW

ZVIEW is a FITS viewer tool for checking HSC data.

- (1) Ask SA to setup ZVIEW on Gen2.
- (2) Confirm “frame ID” (e.g., bias001) of the data to be displayed with the electronic log and execute the following commands.

```
> hscql 1 bias001_
```

This reads an image file into a buffer memory.

```
> tv 1 100 2000 jt
```

This displays the image to the “zimage” window.

- The second and third arguments are lower and upper cut levels for displaying the image, respectively.
- Mouse operation:
 - Left-click → Zooming out
 - Middle-click → Centering
 - Right-click → Zooming in

- (3) Type “key” for the following measurements.

e : show contour

→ If stellar shape is elongated, the focus value should be adjusted.

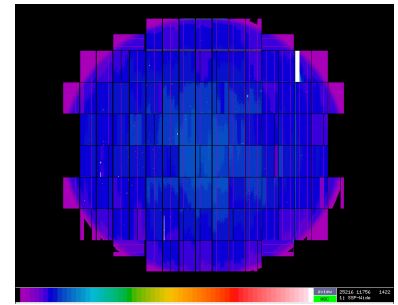
p : show radial profile

→ Stellar size (FWHM) is also displayed.

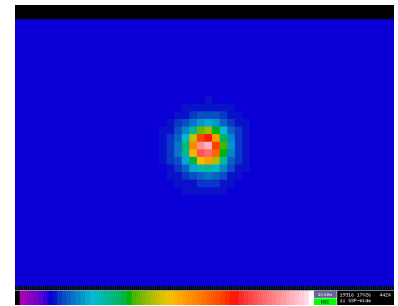
c : draw one column

l : draw one line

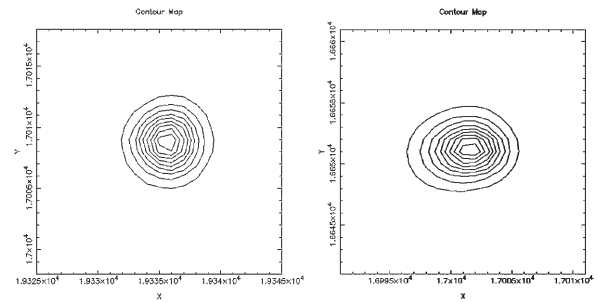
q : exit from key mode



Whole image



Zoomed in view



On-focus image

Off-focus image

4 qfview

“qfview” is an alternative tool for quickly monitoring the stellar shape.

- (1) Login to “sumda” server.

```
$ ssh -X o#####@sumda.sum.subaru.nao.ac.jp
```

- (2) Confirm “visit number” (6 digits) of the data to be checked with the electronic log and execute the following command.

```
$ /home/terai/hsc/qfview #####
```

“#####” is the visit number.